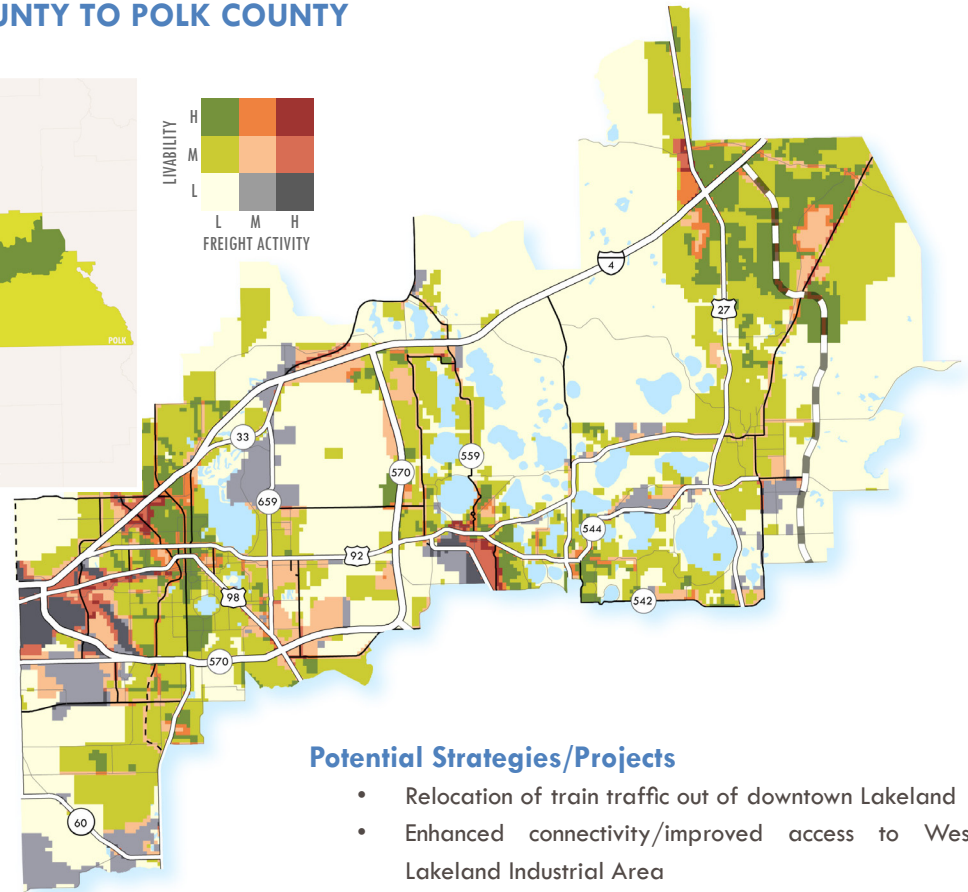
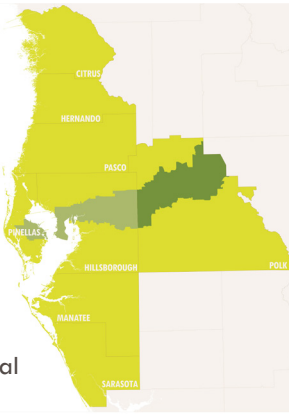


FREIGHT TRAVEL MARKET SUMMARY NO. 2B: OSCEOLA COUNTY TO POLK COUNTY

Trends and Conditions

- Total truck volume is forecast to increase at a higher rate than total auto volume.
- Freeways and regional freight mobility corridors are projected to carry the vast majority of total truck traffic in the travel market in 2035.
- Freeways are projected carry around 36 percent of all traffic but 57 percent of truck traffic in 2035.
- Truck traffic in the travel market is projected to grow fastest on freeways.
- Trucks are expected to comprise around 30 percent of total traffic on freeways by 2035 (up from 24 percent in 2010).



Freight Travel Market Issues

- Accessibility and circulation in West Lakeland industrial area, especially access to I-4
- Commuter and truck conflicts at major activity areas: West Lakeland, US 98, Auburndale
- High percent truck traffic throughout the travel market
- Expected increase in number of trains through downtown Lakeland due to planned Winter Haven ILC
- Limited capacity and commuter/freight conflicts on I-4
- Access to Lakeland-Linder Regional Airport
- Dependence on County Line Road in Plant City/West Lakeland freight activity areas to provide connections between I-4, the airport area, and SR 60
- Obsolete interchange functionality at I-4 and SR 33 (Exit 38)
- Inadequate truck parking at I-4 rest areas

Potential Strategies/Projects

- Relocation of train traffic out of downtown Lakeland
- Enhanced connectivity/improved access to West Lakeland Industrial Area
- ITS/signal optimization/truck channelization on US 98, US 92, SR 544, County Line Road, Kathleen Road
- Grade Separation at County Line Road/CSX
- US 92 - Park Rd to Wabash Avenue (2U-4D)
- Extend Gateway Boulevard east to County Line Road and construct new interchange at Gateway Boulevard and Polk Parkway
- Reconstruct I-4 Exit 38 interchange to accommodate signalization and turn lane improvements to better serve truck and commuter traffic
- Provision of additional truck parking at I-4 rest areas
- Extension of South Frontage Road to provide connection between SR 572/Galloway Road and I-4

2035 Freight Network Performance Statistics

| FACILITY CLASS | Total VMT | Class % | Auto VMT | Class % | Truck VMT | Class % | % Truck Traffic |
|---|-------------------|-------------|-------------------|-------------|------------------|-------------|-----------------|
| Limited Access Freeway | 4,973,582 | 36% | 3,472,103 | 31% | 1,501,479 | 57% | 30.2% |
| Regional Freight Mobility Corridor | 5,069,553 | 37% | 4,298,244 | 39% | 771,309 | 29% | 15.2% |
| Other Designated Freight Distribution Route | 2,953,225 | 22% | 2,578,150 | 23% | 375,075 | 14% | 12.7% |
| FAC Street | 735,363 | 5% | 729,075 | 7% | 6,288 | 0% | 0.9% |
| Total | 13,731,723 | 100% | 11,077,572 | 100% | 2,654,151 | 100% | 19.3% |