

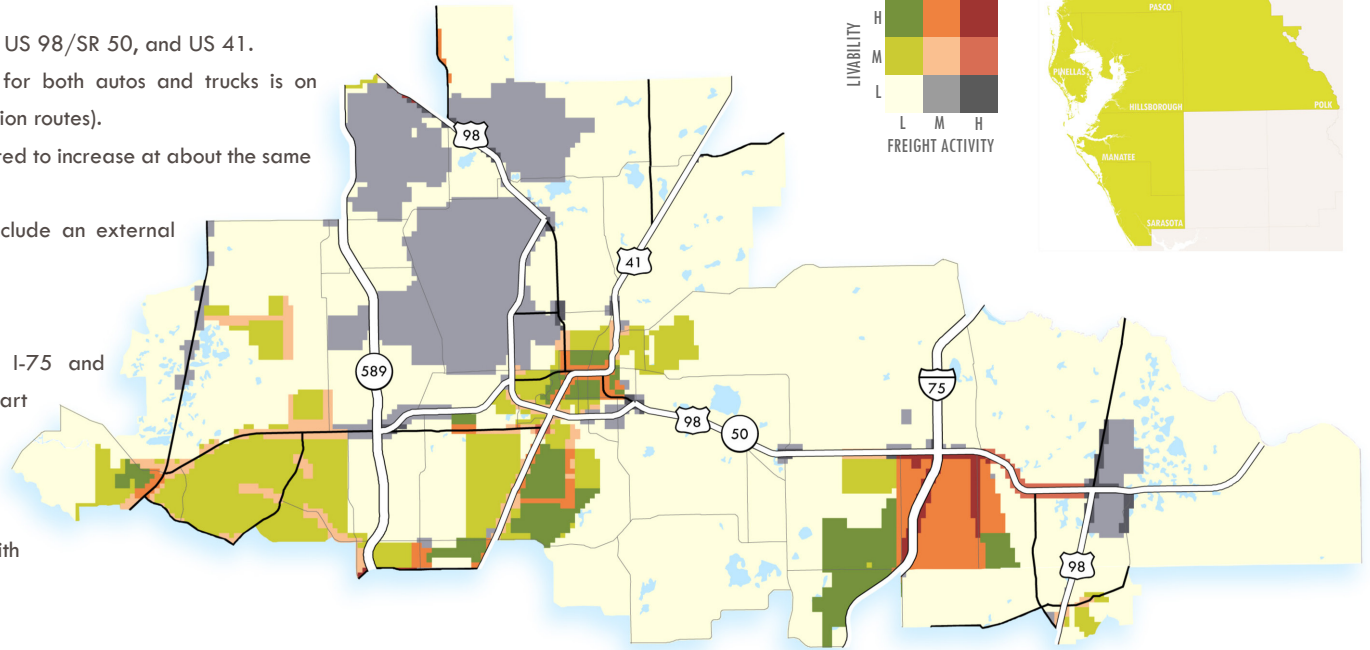
FREIGHT TRAVEL MARKET SUMMARY NO. 8: HERNANDO COUNTY EAST-WEST

Trends and Conditions

- Auto VMT is increasing at a faster rate than truck VMT on all roadway classifications.
- The percentage of trucks is increasing on US 98/SR 50, and US 41.
- The highest expected increase in VMT for both autos and trucks is on arterials (not designated freight distribution routes).
- Heavy truck and light truck VMT is expected to increase at about the same rate from 2007 to 2035.
- Nearly nine of ten heavy truck trips include an external point.

Freight Travel Market Issues

- Truck movements on SR 50 between I-75 and Orlando (long distance from Wal-Mart distribution center); west of I-75 (local delivery; rock hauling)
- Truck traffic in downtown Brooksville
 - mining trucks on SU 98 conflict with livability goals for downtown



2035 Freight Network Performance Statistics

FACILITY CLASS	Total VMT	Class %	Auto VMT	Class %	Truck VMT	Class %	% Truck Traffic	VMC	Total VMT/VMC
Freeway	1,454,376	23%	1,225,433	21%	228,944	44%	15.7%	1,824,029	0.80
Regional Freight Corridor	1,812,160	28%	1,643,580	28%	168,580	32%	9.3%	1,925,192	0.94
Freight Distribution Route	1,563,628	24%	1,479,067	25%	84,561	16%	5.4%	2,012,944	0.78
Arterial	159,656	2%	154,352	3%	5,303	1%	3.3%	229,248	0.70
Collector	1,424,060	22%	1,385,843	24%	38,217	7%	2.7%	2,477,612	0.57
Total	6,413,880	100%	5,888,275	100%	525,605	100%	8.2%	8,469,025	0.76

TRUCK CLASS	I/E Trips (%)	Avg. Length (Mi.)	I/E Trips (%)	Avg. Length (Mi.)	VMT	% of VMT	SUMMARY STATISTICS	
Light Trucks	62%	5.0	38%	10.0	162,372	47%	Ratio of Frt. Travel Mkt. Pct. Truck Traffic to Avg. Pct. Truck Traffic	1.18
Heavy Trucks	14%	7.1	86%	34.4	184,116	53%	Ratio of Frt. Travel Mkt. Pct. Heavy Trucks to Avg. Pct. Heavy Trucks	1.14
All Trucks	51%	5.1	49%	19.8	346,488	100%	Ratio of Frt. Travel Mkt. Pct I/E Trips to Avg. Pct. I/E Trips	1.04

Potential Strategies/Projects

- SR 50 - Lake County to McKethan Rd (2U-4D)
- SR 50 - McKethan to Cortez Blvd Bypass (4D-6D)
- Freight friendly design for heavy trucks to accommodate rock hauling in Hernando
- Grade separation at SR 50/CSX