

FREIGHT TRAVEL MARKET SUMMARY NO. 12: HARDEE COUNTY TO DAVENPORT

Trends and Conditions

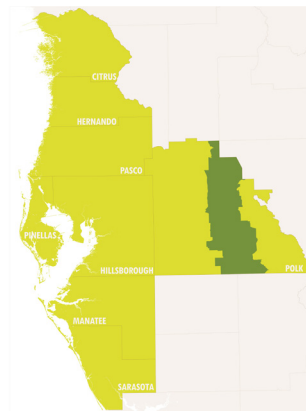
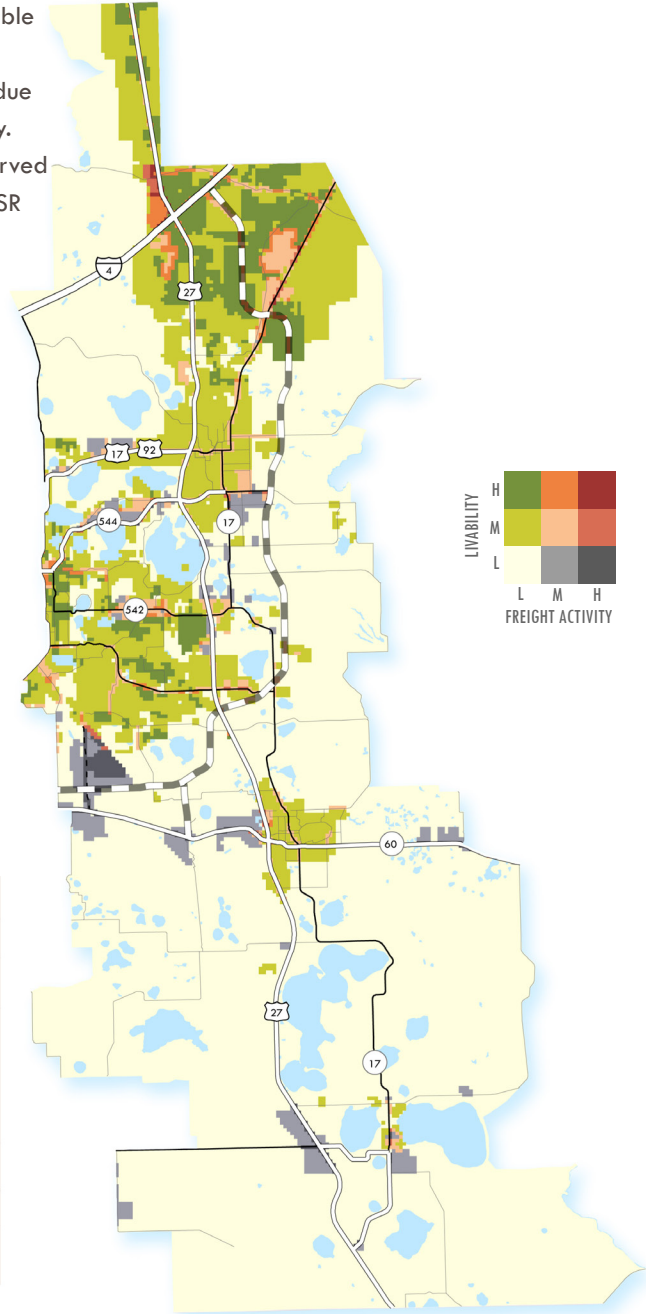
- Truck traffic in the travel market is forecast to nearly double between 2010 and 2035.
- Truck traffic on freeways is expected to more than double due to the planned Winter Haven ILC and Central Polk Parkway.
- The majority of truck and auto traffic is projected to be served by regional freight mobility corridors, notable US 27 and SR 60.
- Trucks are projected to comprise more than 21 percent of total traffic in the travel market and more than 31 percent of all traffic on freeways.

Freight Travel Market Issues

- Increased regional truck traffic on US 27 due to Winter Haven ILC and increased distribution activity from Frostproof, Haines City, Lucerne Park, and Davenport FACs
- Commuter/freight conflicts on US 27, especially north of SR 60

Potential Strategies/Projects

- ITS/signal optimization/channelization on US 27
- Access management and wayfinding plans for Frostproof and Haines City FAC areas to minimize truck traffic using scenic SR 17
- Interchange improvements at US 27/SR 60 to better accommodate trucks



2035 Freight Network Performance Statistics

FACILITY CLASS	Total VMT	Class %	Auto VMT	Class %	Truck VMT	Class %	% Truck Traffic
Limited Access Freeway	1,655,645	19%	1,135,952	17%	519,693	28%	31.4%
Regional Freight Mobility Corridor	5,232,208	60%	4,160,839	61%	1,071,369	57%	20.5%
Other Designated Freight Distribution Route	1,608,430	19%	1,320,023	19%	288,407	15%	17.9%
FAC Street	196,472	2%	194,446	3%	2,026	0%	1.0%
Total	8,692,755	100%	6,811,260	100%	1,881,495	100%	21.6%