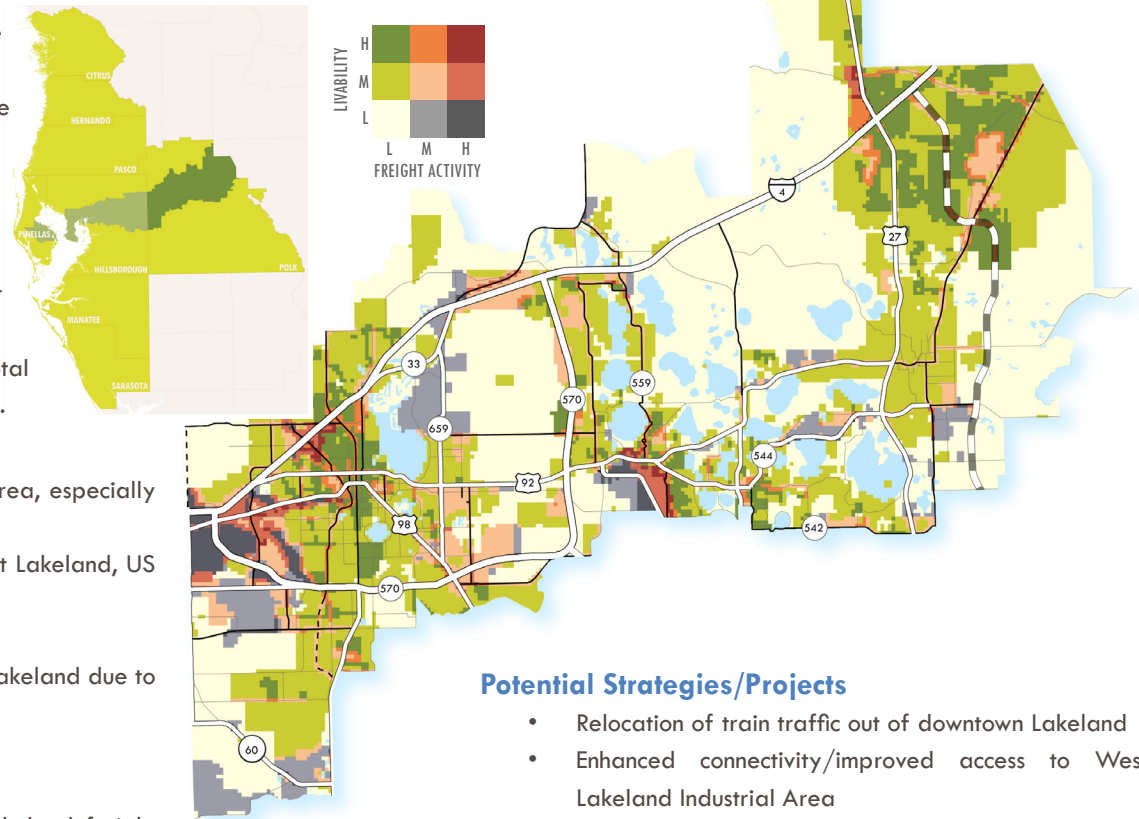


## FREIGHT TRAVEL MARKET SUMMARY NO. 2B: OSCEOLA COUNTY TO POLK COUNTY

### Trends and Conditions

- Total truck volume is forecast to increase at a higher rate than total auto volume.
- Freeways and regional freight mobility corridors are projected to carry the vast majority of total truck traffic in the travel market in 2035.
- Freeways are projected carry around 36 percent of all traffic but 57 percent of truck traffic in 2035.
- Truck traffic in the travel market is projected to grow fastest on freeways.
- Trucks are expected to comprise around 30 percent of total traffic on freeways by 2035 (up from 24 percent in 2010).



### Freight Travel Market Issues

- Accessibility and circulation in West Lakeland industrial area, especially access to I-4
- Commuter and truck conflicts at major activity areas: West Lakeland, US 98, Auburndale
- High percent truck traffic throughout the travel market
- Expected increase in number of trains through downtown Lakeland due to planned Winter Haven ILC
- Limited capacity and commuter/freight conflicts on I-4
- Access to Lakeland-Linder Regional Airport
- Dependence on County Line Road in Plant City/West Lakeland freight activity areas to provide connections between I-4, the airport area, and SR 60
- Obsolete interchange functionality at I-4 and SR 33 (Exit 38)
- Inadequate truck parking at I-4 rest areas

### Potential Strategies/Projects

- Relocation of train traffic out of downtown Lakeland
- Enhanced connectivity/improved access to West Lakeland Industrial Area
- ITS/signal optimization/truck channelization on US 98, US 92, SR 544, County Line Road, Kathleen Road
- Grade Separation at County Line Road/CSX
- US 92 - Park Rd to Wabash Avenue (2U-4D)
- Extend Gateway Boulevard east to County Line Road and construct new interchange at Gateway Boulevard and Polk Parkway
- Reconstruct I-4 Exit 38 interchange to accommodate signalization and turn lane improvements to better serve truck and commuter traffic
- Provision of additional truck parking at I-4 rest areas
- Extension of South Frontage Road to provide connection between SR 572/Galloway Road and I-4

### 2035 Freight Network Performance Statistics

FACILITY CLASS	Total VMT	Class %	Auto VMT	Class %	Truck VMT	Class %	% Truck Traffic
Limited Access Freeway	4,973,582	36%	3,472,103	31%	1,501,479	57%	30.2%
Regional Freight Mobility Corridor	5,069,553	37%	4,298,244	39%	771,309	29%	15.2%
Other Designated Freight Distribution Route	2,953,225	22%	2,578,150	23%	375,075	14%	12.7%
FAC Street	735,363	5%	729,075	7%	6,288	0%	0.9%
<b>Total</b>	<b>13,731,723</b>	<b>100%</b>	<b>11,077,572</b>	<b>100%</b>	<b>2,654,151</b>	<b>100%</b>	<b>19.3%</b>